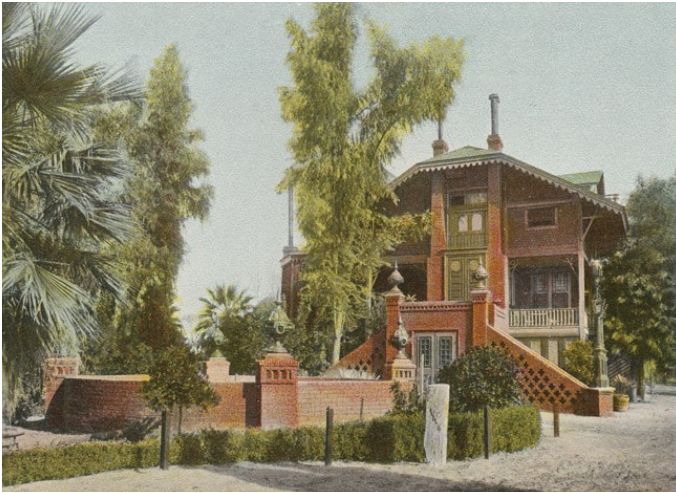


# CALIFORNIA STATE LIBRARY

CALIFORNIA HISTORY SECTION

## RESEARCH GUIDES

FRESNO COUNTY HISTORY



### [Visit Us](#)

*California History Section*

*900 N Street Room 200*

*9:30-4 Monday-Friday*

**This Page  
Intentionally  
Left Blank**

# TABLE OF CONTENTS

---

Organized in 1856, Fresno County boasted a population of about 999,101 people in 2019. Fresno's storied history has included legendary bandits, such as Joaquin Murrieta, Giant Sequoias preserved via the interventions of loggers, as well as engineering feats, such as the Friant Dam and the deeply unusual Forestiere Underground Gardens. Today, the region is known primarily for its rich agricultural sector, but in keeping with its rich traditions, it also boasts a large number of historical societies. If you want to know more about this county, check out the resources that the [California History Section](#) has on the area!

<a href="#">Digitized Resources</a> .....	4
<a href="#">General Research Tips</a> .....	6
<a href="#">Specific Resources in our Catalog</a> .....	8
<a href="#">On-site Research Resources</a> .....	9
<a href="#">Other On-site Resources</a> .....	10
<a href="#">Other Places to Look</a> .....	11

ENJOY YOUR RESEARCH.

## DIGITIZED RESOURCES

Can't come to the library just yet? No worries. There are a number of online resources you can explore related to Fresno County.

---



### [Digitized Publications](#)

A few years ago we digitized some of our more fragile publications. You can now see documents related to Fresno County on Internet Archive.



**URL:** <https://archive.org/>

**Type in Search Box:** (Fresno County) AND collection:(californiastatelibrary)

**Select Option:** "Search Full Text of Books"

---



### [Digitized Images](#)

We have scanned and digitized a portion of our extensive photograph collection, including images related to Fresno County. You can see them on Calisphere.



**URL:** <https://calisphere.org/institution/51/items/>

**Type in Search Box:** ("Fresno County")

---

## DIGITIZED RESOURCES

---



### [California State Association of Counties](#)

Like Wikipedia but locally grown, this government website will provide basic information about Fresno County.



**URL:** <http://www.counties.org/county-websites-profile-information>



### [County Website](#)

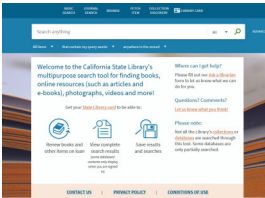
Want to learn about what Fresno County residents have to say for themselves? Check out the county government's website.



**URL:** <https://www.co.fresno.ca.us/>

## GENERAL RESEARCH TIPS

Not finding what you need online? We have additional materials available that cannot be accessed digitally. You can use the following resources to learn about our resources.



### Catalog

If you are looking for Fresno County materials, your best source is our [catalog](#). You can do a general search on the catalog but also be sure to check out our specialized resources on page 8 of this research guide.



**URL:** <https://csl.primo.exlibrisgroup.com/discovery/search?>

[vid=01CSL\\_INST:CSL&lang=en&sortby=rank](#)

**Type in Subject Box:** (Fresno County)



### California Information File II

Sometimes the catalog doesn't provide as much detail as you might like. This is why we created the California Information File II, successor to the analog California Information File I. In this resource, you can find indexing to individual articles, as well as Fresno County deeds, restaurant menus, pamphlets and more.



**URL:** <https://www.library.ca.gov/california-history/databases/cainfoii>

**Type in Search Box:**

1. Fresno
2. Name of a city in Fresno County

## GENERAL RESEARCH TIPS

---

City and County Directories

→ Enter one or more search terms. The more terms you enter, the fewer results you will get.

To search for a date range, type a colon between the years, e.g., 1945:1950.

County  
AND ▾

City  
AND ▾

Year  
AND ▾

Title  
AND ▾

Author  
AND ▾

Publisher  
AND ▾

Material type  
AND ▾

Submit Query Reset Help

### City Directories

Looking for a person? How about the history of a location? You can trace this information and more via our city directories. See what we have by checking our specialized database.



**URL:** <https://www.library.ca.gov/california-history/databases/citycounty>

#### **Type in Search Box:**

1. Fresno
2. Name of a city in Fresno County

Telephone Directories

→ Type in the city or county. If you get too many results, add the year to your search.

Location-White Pages  
AND ▾

Location-Yellow Pages  
AND ▾

→ To search for a date range, type a colon between the first and last years, e.g., 1915:1920.

Year  
AND ▾

Material type  
AND ▾

→ Request all items at the Information Desk.

Submit Query Reset Help

### Telephone Books

Are you not finding what you need in our city directory collection? No worries, you might find it in our telephone book collection. See what we have by checking our phone book database.



**URL:** <https://www.library.ca.gov/california-history/databases/phone>

#### **Type in Search Box:**

1. Fresno
2. Name of a city in Fresno County

## SPECIFIC RESOURCES IN OUR CATALOG

Fresno County has a long and distinguished history. Check out our resources by type and by subject to learn more about this county's complex past.

---

Type	Residents
<a href="#">Maps</a>	<a href="#">Vitals</a>
<a href="#">Books</a>	<a href="#">German Americans</a>
<a href="#">County Histories</a>	<a href="#">Japanese Americans</a>
<a href="#">Images</a>	<a href="#">Latin Americans</a>
<a href="#">Manuscripts</a>	<a href="#">Native Americans</a>
	<a href="#">Women</a>

Subject		
<a href="#">Aeronautics</a>		
<a href="#">Agriculture</a>		
<a href="#">Art</a>		
<a href="#">Baseball</a>		
<a href="#">Business</a>		
<a href="#">Cooking</a>	<a href="#">Medicine</a>	
<a href="#">Education</a>	<a href="#">Migration</a>	
<a href="#">Environment</a>	<a href="#">Mining</a>	<a href="#">Restaurants</a>
<a href="#">Festivals</a>	<a href="#">Music</a>	<a href="#">Streets</a>
<a href="#">Fiction</a>	<a href="#">Oil</a>	<a href="#">Taxes</a>
<a href="#">Fire</a>	<a href="#">Poetry</a>	<a href="#">Water</a>
<a href="#">Folklore</a>	<a href="#">Politics</a>	<a href="#">Wildlife</a>
<a href="#">Geology</a>	<a href="#">Railroads</a>	<a href="#">Wine</a>
<a href="#">Land</a>	<a href="#">Religion</a>	<a href="#">1960s</a>



A map of California with county boundaries. Fresno County is highlighted in red, located in the central-eastern part of the state.



## ON-SITE RESEARCH RESOURCES

Our collection predates computers and so do some of our access points. If you are in the library, be sure to check the following analog files for leads on more resources.

---



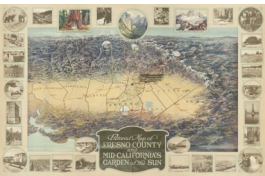
### California Information File

In the library? Check the California Information File before you do anything else. This file indexes over 130 years of California articles, books, and manuscript collections from all 58 counties.



**Subject Headings:** Fresno County

---



### Map File

Looking for a Fresno County map? Our map file is a great place to start. We have a wide variety of maps, including Sanborn fire insurance maps. Some of our maps cover settlement patterns and even natural history.



**Subject Headings:** Counties: Fresno

---



### Photographic File

Sometimes a picture is worth a 1000 words and not all of our pictures are online. To check the rest of the collection search our picture file card catalog.



**Subject Headings:** Counties: Fresno

---

## OTHER ON-SITE RESOURCES

Despite our best efforts, some of our resources defy complete description. We suggest that you ask a librarian about Fresno County information contained in the following resources.

---

### Vertical Files



Our massive collection of vertical files covers a wide variety of topics including individual counties. You can check them for pamphlets, certificates and even posters related to organizations, individuals, and area histories.



**Subject Headings:** Counties: Fresno

---



### Postcard Files

Separate from our photo collection, our postcard collection contains a number of images related to Fresno County. Most are not online.



**Subject Headings:** Fresno County

---

## OTHER PLACES TO LOOK

Can't find what you need in our collection? You may want to contact the following organizations.

---



### **Other California State Library Sections**

[Government Publications Section](#)

[Witkin Law Library](#)

[Sutro Library](#)

[General Information](#)



<http://www.library.ca.gov/government-publications/>

<http://www.library.ca.gov/law/>

<http://www.library.ca.gov/sutro/>

<https://www.library.ca.gov/services>

---



### **Other Organizations**

[Fresno County Public Library](#)

[Fresno City and County Historical Society](#)

[Archives](#)

[Afro-American Historical & Genealogical Society of Central California](#)

[Fresno County Genealogical Society](#)

[Fresno County Recorder](#)



<http://www.fresnolibrary.org/ref/refdep.html>

<https://www.valleyhistory.org/>

<https://sites.google.com/site/aahgsc2/>

<https://fresnogenealogy.org/>

<https://www.co.fresno.ca.us/departments/recorder/recorder-contact>

---



CALIFORNIA STATE LIBRARY  
CALIFORNIA HISTORY SECTION

*California History Section*  
900 N Street Room 200  
Sacramento CA 95814

Phone: (916) 654-0176  
E-mail: [cslcal@library.ca.gov](mailto:cslcal@library.ca.gov)  
Hours: 9:30-4 Monday-Friday

This guide is also available online at:  
<https://www.library.ca.gov/california-history/research-guides/>