

CALIFORNIA STATE LIBRARY

CALIFORNIA HISTORY SECTION

RESEARCH GUIDES

MADERA COUNTY HISTORY



[VISIT US](#)

California History Section

900 N Street Room 200

9:30-4 Monday-Friday

**This Page
Intentionally
Left Blank**

TABLE OF CONTENTS

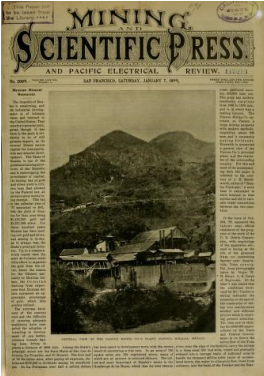
Founded in 1893, Madera County had a population of 157,672 as of 2018. As part of the Mother Lode, this county boasts several historic mines, but in addition to gold it also features other geological wonders such as Devils Postpile. As might be expected of a gold region, Madera also has a number of ghost towns, as well as organizations active in preserving the region's unique character. If you are looking for exciting local history resources in the [California History Section's](#) rich collections, then check out what we have for this county.

Digitized Resources	4
General Research Tips	6
Specific Resources in our Catalog	8
On-site Research Resources	9
Other On-site Resources	10
Other Places to Look	11

ENJOY YOUR RESEARCH.

DIGITIZED RESOURCES

Can't come to the library just yet? No worries. There are a number of online resources you can explore related to Madera County.



[Digitized Publications](#)

A few years ago we digitized some of our more fragile publications. You can now see documents related to Madera County on Internet Archive.



URL: <https://archive.org/>

Type in Search Box: (Madera County) AND collection:(californiastatelibrary)

Select Option: "Search Full Text of Books"



[Digitized Images](#)

We have scanned and digitized a portion of our extensive photograph collection, including images related to Madera County. You can see them on Calisphere.



URL: <https://calisphere.org/institution/51/items/>

Type in Search Box: ("Madera County")

DIGITIZED RESOURCES



[California State Association of Counties](#)

Like Wikipedia but locally grown, this government website will provide basic information about Madera County.



URL: <http://www.counties.org/county-websites-profile-information>



[County Website](#)

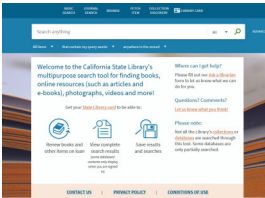
Want to learn about what Madera County residents have to say for themselves? Check out the county government's website.



URL: <https://www.maderacounty.com/>

GENERAL RESEARCH TIPS

Not finding what you need online? We have additional materials available that cannot be accessed digitally. You can use the following resources to learn about our resources.



Catalog

If you are looking for Madera County materials, your best source is our [catalog](#). You can do a general search on the catalog, but also be sure to check out our specialized resources on page 8 of this research guide.



URL: <https://csl.primo.exlibrisgroup.com/discovery/search?>

[vid=01CSL_INST:CSL&lang=en&sortby=rank](#)

Type in Subject Box: (Madera County)



California Information File II

Sometimes the catalog doesn't provide as much detail as you might like. This is why we created the California Information File II, successor to the analog California Information File I. In this resource, you can find indexing to individual articles, as well as Madera County deeds, restaurant menus, pamphlets and more.



URL: <https://www.library.ca.gov/california-history/databases/cainfoii>

Type in Search Box:

1. Madera
2. Name of a city in Madera County

GENERAL RESEARCH TIPS

City and County Directories

→ Enter one or more search terms. The more terms you enter, the fewer results you will get.
To search for a range of years, type a colon between the years, e.g., 1945:1950.

County
AND ▾

City
AND ▾

Year
AND ▾

Title
AND ▾

Author
AND ▾

Publisher
AND ▾

Material type
AND ▾

Submit Query Reset Help

City Directories

Looking for a person? How about the history of a location? You can trace this information and more via our city directories. See what we have by checking our specialized database.



URL: <https://www.library.ca.gov/california-history/databases/citycounty>

Type in Search Box:

1. Madera
2. Name of a city in Madera County

Telephone Directories

→ Type in the city or county. If you get too many results, add the year to your search.

Location-White Pages
AND ▾

Location-Yellow Pages
AND ▾

→ To search for a date range, type a colon between the first and last years, e.g., 1915:1920.

Year
AND ▾

Material type
AND ▾

→ Request all items at the Information Desk.

Submit Query Reset Help

Telephone Books

Are you not finding what you need in our city directory collection? No worries, you might find it in our telephone book collection. See what we have by checking our phone book database.



URL: <https://www.library.ca.gov/california-history/databases/phone>

Type in Search Box:

1. Madera
2. Name of a city in Madera County

SPECIFIC RESOURCES IN OUR CATALOG

Madera County has a long and distinguished history. Check out our resources by type and by subject to learn more about this county's complex past.

Type

[Books](#)

[Images](#)

[Manuscripts](#)

[Newspapers](#)

[Periodicals](#)

[Vital Statistics](#)



Subject

[Agriculture](#)

[Business](#)

[Education](#)

[Environment](#)

[Fiction](#)

[Geology](#)

[Land](#)

[Legal](#)

[Migration](#)

[Mining](#)

[Native Americans](#)

[Politics](#)

[Religion](#)

[Water](#)

[Wine](#)

ON-SITE RESEARCH RESOURCES

Our collection predates computers and so do some of our access points. If you are in the library, be sure to check the following analog files for leads on more resources.



California Information File

In the library? Check the California Information File before you do anything else. This file indexes over 130 years of California articles, books, and manuscript collections from all 58 counties.



Subject Headings: Madera County



Map File

Looking for a Madera County map? Our map file is a great place to start. We have a wide variety of maps, including Sanborn fire insurance maps. Some of our maps cover settlement patterns and even natural history.



Subject Headings: Counties: Madera



Photographic File

Sometimes a picture is worth a 1000 words and not all of our pictures are online. To check the rest of the collection search our picture file card catalog.



Subject Headings: Counties: Madera

OTHER ON-SITE RESOURCES

Despite our best efforts, some of our resources defy complete description. We suggest that you ask a librarian about Madera County information contained in the following resources.

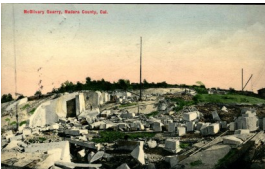
Vertical Files



Our massive collection of vertical files covers a wide variety of topics including individual counties. You can check them for pamphlets, certificates and even posters related to organizations, individuals, and area histories.



Subject Headings: Counties: Madera



Postcard Files

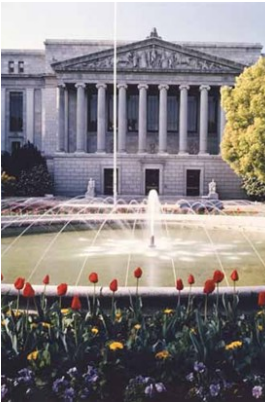
Separate from our photo collection, our postcard collection contains a number of images related to Madera County. Most are not online.



Subject Headings: Madera County

OTHER PLACES TO LOOK

Can't find what you need in our collection? You may want to contact the following organizations.



Other California State Library Sections

[Government Publications Section](#)

[Witkin Law Library](#)

[Sutro Library](#)

[General Information](#)



<http://www.library.ca.gov/government-publications/>

<http://www.library.ca.gov/law/>

<http://www.library.ca.gov/sutro/>

<https://www.library.ca.gov/services>



Other Organizations

[Madera County Library](#)

[Madera County Museum](#)

[County Clerk-Recorder](#)



<https://www.maderacounty.com/government/madera-county-library>

<http://madera-museum.com/>

<https://www.maderacounty.com/government/county-clerk-recorder-elections>



CALIFORNIA STATE LIBRARY
CALIFORNIA HISTORY SECTION

California History Section
900 N Street Room 200
Sacramento CA 95814

Phone: (916) 654-0176
E-mail: cslcal@library.ca.gov
Hours: 9:30-4 Monday-Friday

This guide is also available online at:
<https://www.library.ca.gov/california-history/research-guides/>